

创新性教学实践分享及研讨

王明坤

ACCA中国APM资深教学顾问

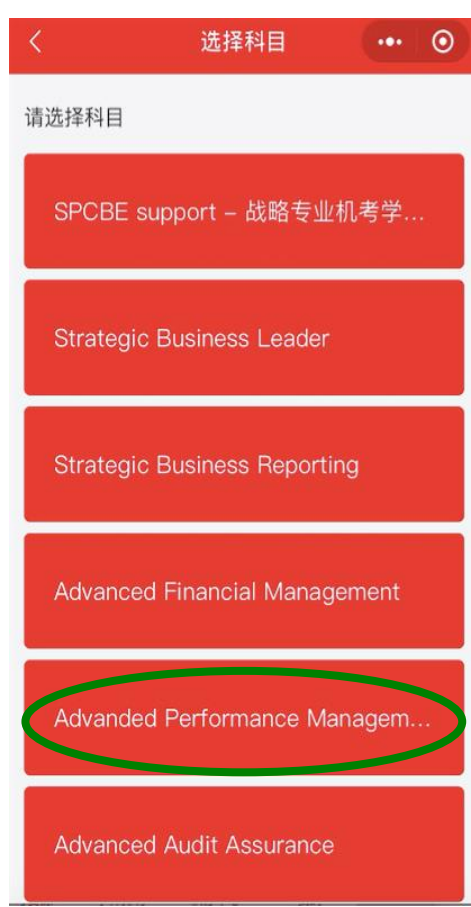
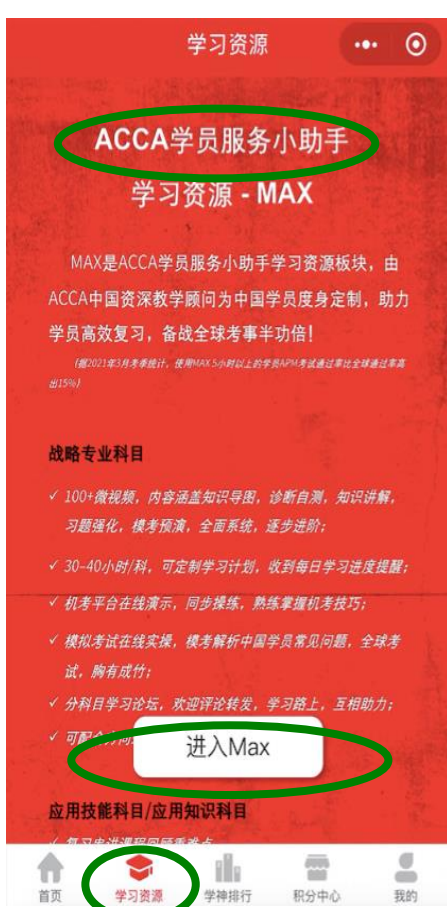
2022 July

教学挑战以及如何应对的一点思考和心得

1. 课时不够用
2. 如何打破单一的“我说你听”
3. Employability / 职业技能如何培养
4. “看得懂、听得懂，但是写不出”的局面怎么破
5. 疫情下如何提升学生网课的体验

课时不够用

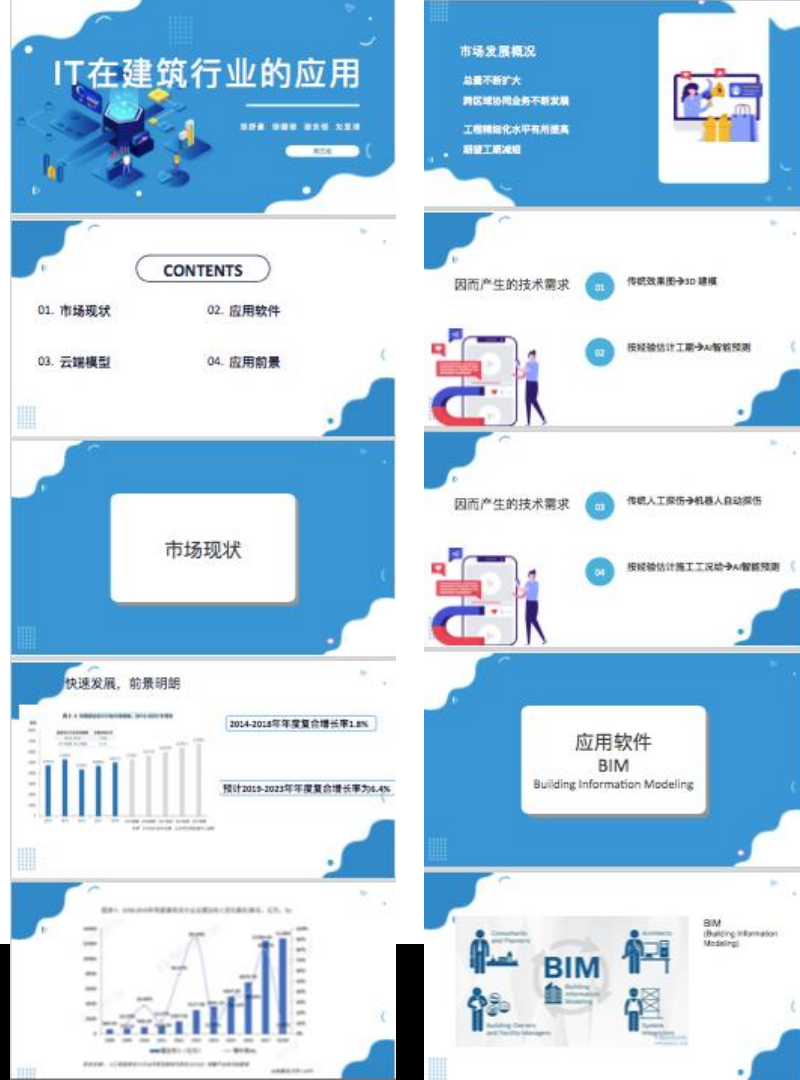
碎片时间出来凑



如何打破单一的“我说你听”

翻转课堂是个好帮手

- 分小组设置案例讨论并做课堂展示
- 学生来讲复习课



Employability/ 职业技能如何培养

从“娃娃”抓起

- BT：使用SBL案例集对关键模型做练习，分组完成并用英语展示
- MA：提炼APM考题的相关部分布置为课后作业
所有计算用excel demo并要求学生用excel完成练习

善用EPSM

Employability/ 职业技能如何培养

Telford Engineering

Head of Accounting
Telford Engineering - Ayetown, Menai

Posted 5 days ago · 101 views
Be one of the first 25 applicants!

Save Easy Apply

Job description

Head of Accounting
\$70,000 per annum

Telford Engineering is a long established successful steel fabricator and manufacturing business in Menai. We are recruiting for a Head of Accounting for our head office in Menai. The role is a full-time position with the successful candidate starting as soon as possible.

Working directly for the Chief Finance Officer, the Head of Accounting, along with their large team of 17, will be responsible for the delivery of timely and accurate statutory and management accounts. In addition, you will need to provide valuable and insightful financial and performance reporting and analysis to the Board. This will include financial modelling and analysis to aid business decisions.

On this wide-ranging role, you will need to demonstrate excellent leadership and communication skills across the business.

It is desirable that you have experience of working for or with a growing manufacturing business in a lead role with accounts - you will be analytically minded and be comfortable with management accounting, strategic aspects of finance, but also experienced in the day to day running of the department, managing receivables, payables, payroll and cash and long term asset management in an international manufacturing business environment.

Candidates must be minimum ACCA Qualified with strong technical skills and have experience in the above duties. This is a key appointment for the business and a great opportunity for an individual who is looking to add value.

Ideally you will be ambitious and willing to take additional challenges and responsibilities. In this role, you will receive a high level of support from the senior leadership team - you will be expected to work confidently in your role and will receive an excellent salary, package and opportunity.



Jamie Roberts

A: 5 Sunny Court, Ayetown, Menai, MA14 5SS
H: 01765 697750 M: 0788770325

Personal statement

A highly experienced finance professional, qualified ACCA in 2011 with a degree in Business & Finance. Strengths include excellent business planning and strategic goal setting combined with core financial accounting abilities. Effective communicator across all levels. Dedicated and focused to successfully drive projects to completion.

Qualifications

Ayetown Grammar School (2000 - 2005)
10 GCSE Passes with Merits and Distinctions 3 A Levels Passes at Grades A-C, including Maths, Physics and Economics

Banarfon University (2008)
BA (Hons) Business & Finance -2.2 (Honours) Class

ACCA (2011)
Qualified, first time passes

Career history

Nauti Foods - www.nautifoods.co.me (September 2011 - Present)
Finance manager
Nautical Foods packages and distributes specialist seafood products to top hotels and restaurants within Menai and internationally. A unique company with a solid reputation, current turnover is £25 million.

- Responsibilities include:**
- Managed the daily finance function including a ledger team of 6
 - Produced a detailed cash-flow model for the company to ensure accurate reporting
 - Installed new procedures and controls within the finance department
 - Introduced more concise monthly management accounts procedures
 - Attended board meetings and reviews
 - Created overhead and gross margin reports to assist the businesses commercial decision making process
 - Corporation tax computations and statutory accounts

Slam Group (December 2008 - August 2011)
Management Accountant
Slam Group now owned by Acima Holdings specialises in providing services to people aged 50 and over, these include holidays, car insurance and healthcare. Group turnover is £1.2 billion.

- Responsibilities include:**
- Produced monthly consolidated management accounts and year-end financial accounts
 - Daily cash flow reporting and financial scenario modelling for all potential project outcomes
 - Reviewed long term funding agreements within the group, advising on appropriate action when agreements were due to expire

How to improve my CV

测试详情 测试设置 批阅测试 测试分析

1.单选题 (分值1.0分, 难度: 易, 21人参与)

Question 1 of 1

Which of the following statements is not a?

The correct answer is D. The answer is not D as the question asks for the statement that is not a correct statement.

The incorrect answer is A because it is a correct statement. A correct statement is one that is true according to the question.

The incorrect answer is B because it is a correct statement. A correct statement is one that is true according to the question.

The incorrect answer is C because it is a correct statement. A correct statement is one that is true according to the question.

Options: A.A, B.B, C.C, D.D

得分率: 45%

2.单选题 (分值1.0分, 难度: 易, 20人参与)

Question 2 of 1

Which of the following is not a business function?

The correct answer is D. The answer is not D as the question asks for the function that is not a business function.

The incorrect answer is A because it is a business function. A business function is one that is part of the normal operations of a business.

The incorrect answer is B because it is a business function. A business function is one that is part of the normal operations of a business.

The incorrect answer is C because it is a business function. A business function is one that is part of the normal operations of a business.

Options: A.A, B.B, C.C, D.D

得分率: 50%

3.多选题 (分值1.0分, 难度: 易, 20人参与)

How to handle interview

测试详情 测试设置 批阅测试 测试分析

1.单选题 (分值1.0分, 难度: 易, 23人参与)

Question 1 of 1

Which of the following is not a business function?

The correct answer is D. The answer is not D as the question asks for the function that is not a business function.

The incorrect answer is A because it is a business function. A business function is one that is part of the normal operations of a business.

The incorrect answer is B because it is a business function. A business function is one that is part of the normal operations of a business.

The incorrect answer is C because it is a business function. A business function is one that is part of the normal operations of a business.

Options: A.A, B.B, C.C

得分率: 64%

2.单选题 (分值1.0分, 难度: 易, 23人参与)

Question 2 of 1

Which of the following is not a business function?

The correct answer is D. The answer is not D as the question asks for the function that is not a business function.

The incorrect answer is A because it is a business function. A business function is one that is part of the normal operations of a business.

The incorrect answer is B because it is a business function. A business function is one that is part of the normal operations of a business.

The incorrect answer is C because it is a business function. A business function is one that is part of the normal operations of a business.

Options: A.A, B.B, C.C

得分率: 64%

3.多选题 (分值1.0分, 难度: 易, 20人参与)

“看得懂 听得懂 但是写不出” 的局面怎么破

判分练习不能少

- 让学生清楚如何可以得分
- 学生相互判分
- 使用MAX了解更多

Slide 1: Speaker Notes

1. it not only need financil data to anlysis the profitability of Nehby, which only focus on the revenue and sales. but also need non-financial information just like the staff turnover to get to know the satisfy of the staff. as they are also an important factor for company development and the decision making

2. currently, Nehby is make decision about the construction of the hotel thus, the account information should contain information which sepcific about the budget and forecast cash flow for this project. so that the company can monitor the process of the project regularly. also need the information about each of the restruant so that the manager can compare the information about them and evaluate the performance is great or not. if industry average information can be provide it will be better.

3. the rent and assurance of the building should not be allocated to the admin. and this allocation will cause the performance doesn't be evaluated correctly and not good for manager to find the cause of the reduce of the profit.



疫情下如何提升学生网课的体验

让互动更多 但更简单

- 更多客观题插入教学中
- 依据答题情况进一步互动
- 小测验随时用



Quiz: Part C (25 mins)

已结束 | 截止时间: 2022/04/23 12:15 | 普通测试 | 限时: 25分钟

测试



Quiz: Part D (18mins)

已结束 | 截止时间: 2022/04/09 12:28 | 普通测试

测试

1. 多选题 (5分) 难度: 易

Which of following quality costs identified is/are prevention cost?

- A.Repairs and replacements under customer warranties
- B.Customer relationship management – complaint handling
- C.Performance testing of final assembly
- D.Performance testing of subcomponents from suppliers
- E.Costs of re-inspection after repairs arising from final assembly testing
- F.Training in quality control
- G.Maintenance of inspection equipment
- H.Buying of high quality material
- I.I. Scrapping cost of unqualified final products

2. 多选题 (5分) 难度: 易

Which of following quality costs identified is/are appraisal cost?

- A.Repairs and replacements under customer warranties
- B.Customer relationship management – complaint handling
- C.Performance testing of final assembly
- D.Performance testing of subcomponents from suppliers
- E.Costs of re-inspection after repairs arising from final assembly testing
- F.Training in quality control
- G.Maintenance of inspection equipment
- H.Buying of high quality material
- I.I. Scrapping cost of unqualified final products

An aerial photograph of a beach with waves crashing on the shore. The water is a deep teal color, and the sand is light brown. The waves are white and foamy. The text 'Thank you!' is overlaid in the center in a large, white, sans-serif font.

Thank you!